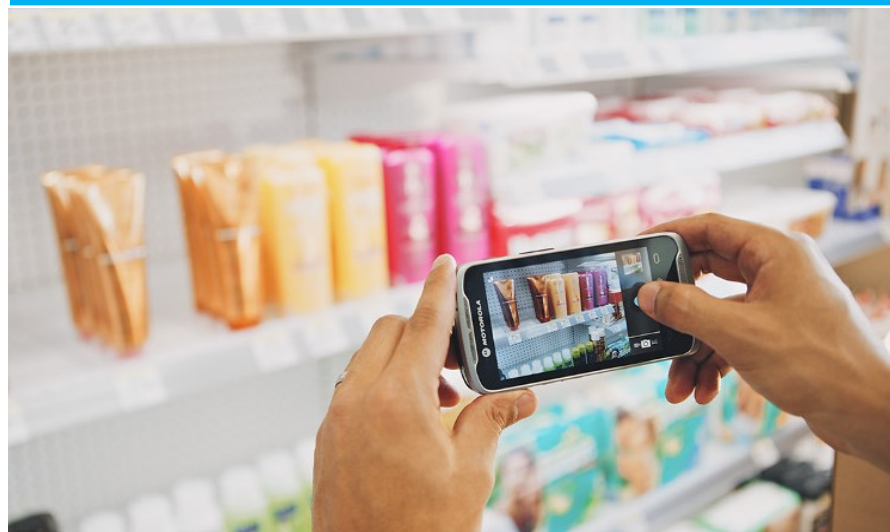


# MOTOROLA SOLUTIONS™

## TC55 ACCESSORIES





# TC55 SPEC

## System:

- 1.5 GHz Dual Core Processor
- 1GB RAM / 8GB Flash
- Accessible micro SD (up to 32 GB supported)
- Android Enterprise Jelly Bean

## Connectivity:

- HSPA+ (ROW)
- WLAN: 802.11 a/b/g/n
- WPAN: BT 4.0 (hi speed BT and BT low energy)
- Micro USB 2.0 Client (Host / Client)
- Integrated GPS and GLONASS
- Wireless mobile hot spot support

## Data Capture:

- 1D Linear Imager option
- Rear facing 8MP autofocus camera optimized for 1D and 2D data capture
- NFC

## Power:

- 2,940 mAh battery with gas gauging (user replaceable)
- 4,410 mAh 1.5X battery option
- Charging via bottom contacts and micro USB



## Ergonomics & UI:

- PTT optimal, dual front facing speakers
- 4.3" Color WVGA display, outdoor viewable
- Capacitive touch panel supports operation when wet, with gloves, and supports fine pitch signature capture
- Gorilla Glass 2™ touch panel
- 4 capacitive front panel keys (one programmable)
- 1 programmable side key (PTT, Scan, etc.)

## Durability:

- 4ft drop MIL STD 810G"
- 150 ½ meter tumbles"
- IP67 sealing
- -10 – 50 C Op temp
- Gorilla Glass™ touch panel, camera, and imager exit windows
- *\*Protective boot increases durability drop to concrete across operating temperature and increases tumble to 300 ½ meter tumbles*

## Audio:

- Handset audio
- Dual noise canceling mics
- Dual front facing speakers
- 3.5mm headset jack
- Vibrate alert

## Accessory Eco-system:

- Rugged charging cable provided with device to interface with bottom charge contacts
- 5 slot charge cradles
- Vehicle charge cradle
- Protective boot that increases durability
- Soft shell, leather holster
- Fine point, conductive stylus
- NOTE: all accessories will integrate and work with the 1X and 1.5X batteries and they will integrate and work with the protective case and without a protective case in place

## Enterprise Software

- Rapid Deployment Utility
- Mobile WFM Manager compatible
- Rho Suite
- Android MX for Enterprise



# What comes in the Box?

## TC55 Device

(Electronic User Guide loaded onto device)



## TC55 Rugged Charge Cable



**Note: Power Supply Sold Separately**

## TC55 Regulatory Guide





## TC55 Rugged Charge Cable

### [CBL-TC55-CHG1-01](#)



Works with or without protective boot.  
Requires Power Supply Wall Adapter;  
(PWRS-124306-01R) sold separately. →



## Power Supply

### [PWRS-124306-01R](#)

Power Supply-100-240 VAC,  
5 V, 1.2 A Power Supply:  
100-240 VAC, 5V, 1.2A w/plugs.

Includes four international plugs for US, UK, EU & AU.

Provides a full 1.2 amps of power for rapid battery charging.



For Brazil Order: [PWRS-124306-01BR](#): PS 90-264VAC, 5V,1.2A w/Brazil & U.S. plug

For China Order: [PWRS-124306-01CN](#): PS: 90-264VAC, 5V,1.2A w/China plug

For South Korea Order: [PWRS-124306-01S](#): PS 90-264VAC, 5V,1.2A w/S. Korean plug

# TC55 Lithium-Ion Batteries

## Features:

User replaceable battery

Smart battery with:

- Fuel gauging
- Manufacturing date
- Cycle count



# TC55 Batteries & Battery Doors



Lithium Ion	<b>1X</b>	<b>1.5X</b>
P/N:	<a href="#">BTRY-TC55-29MA1-01</a>	<a href="#">BTRY-TC55-44MA1-01</a>
For Brazil Order:	<a href="#">BTRY-TC55-29BR1-01</a>	<a href="#">BTRY-TC55-44BR1-01</a>
Battery Door SKU	<a href="#">KT-TC55-29BTYD1-01</a>	<a href="#">KT-TC55-44BTYD1-01</a>
mAh	2940	4410
TC55Dimensions:	137.2 X 69 X1 5.9 mm	137.2 X 69 X 22.8 mm
TC55 Weight:	220 grams	250 grams
Talk Time:	16 Hours	24 Hours



Test Profile:  
 WAN on 100% ; GPS on 100%; BT off, WIFI on ( not associated to AP: worst case); 350 scans/hour; Send 500k bytes every 2 hours (ATT 4G); Back-light 50%; Display on 75%, off 25%;—> Standard Battery: 13 hours; —> Extended Battery 18.5 hours

# TC55 Holster



**SG-TC55-HLSTR1-01**



Magnetic Flap allows for quick closure



Stylus can be stored in upper flap

Holster accommodates:

- 1X or 1.5X battery
- Optional Protective Boot
- Stylus in upper flap



Rugged Belt Clip

# TC55 Protective Boots

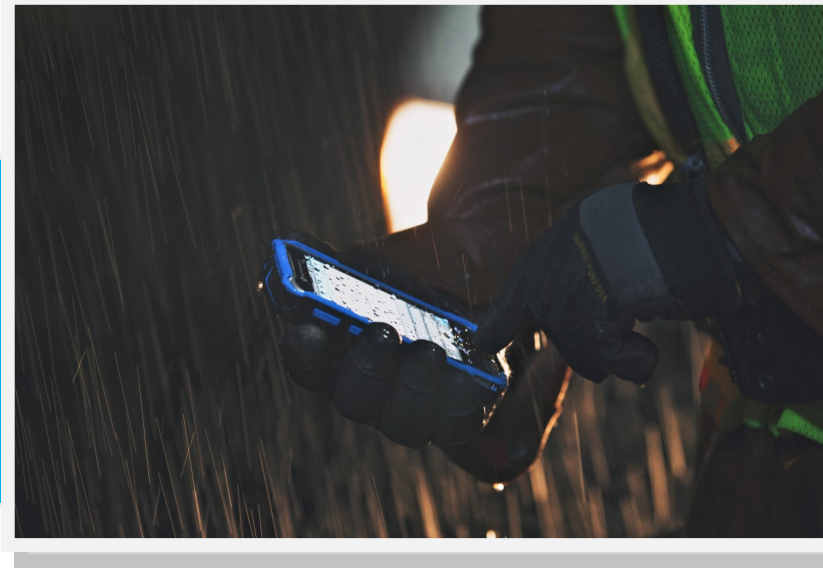


- ◆ Provides additional protection
- ◆ Battery, SIM, and micro SD are accessible when boot is in place
- ◆ Stylus (sold separately) can be snapped into side of Boot
- ◆ Can be used with all other accessories including:
  - ◆ 1X & 1.5X Batteries
  - ◆ Charging Accessories
  - ◆ Vehicle Cradle
  - ◆ Holster

Available in 2 Color Options:

Blue & Black: [SG-TC55-BOOT1-01](#)

Grey & Black: [SG-TC55-BOOT2-01](#)



# TC55 Stylus

Stylus ships with tether;  
Can be snapped into Boot or stored in upper flap of Holster



Available in 1 & 3 Packs:

Single Pack: [KT-TC55-STYLUS1-01](#)

3-Pack: [KT-TC55-STYLUS1-03](#)



# TC55

## Vehicle Cradle

[CRD-TC55-VCD1-01](#)



## Auto Charge Cable

[VCA400-01R](#)

12/24 VOLT MICRO USB AUTO CHARGER (CIG ADPTR)  
Designed to withstand the demanding requirements of commercial use where up-time is prime consideration.

Input: 12-24VDC 1.3A

Output: 5.0V— 1.2A



**NOTE: The VCA400-01R auto charge cable is designed to connect directly to the micro USB port on the TC55 vehicle cradle. It should NOT be used to connect directly to TC55.**

- TC55 Vehicle Cradle includes Suction Cup Installation Kit.
- Accommodates Device with or without Protective Boot.
- Vehicle cradle enables charging through the rugged connector on the bottom of the TC55 by passing power through the micro USB connector located at the rear of the cradle. An Auto Charge Cable is required and sold separately.



# TC55 5-SLOT CHARGE ONLY CRADLE

## CRDUNIV-55-5000R

- ◆ Accommodates up to 5 TC55's
- ◆ Can Support 1X or 1.5X Batteries
- ◆ Can Charge Terminal with or without Protective Boot  
( remove shim from terminal cup to accommodate terminal w/protective boot)
- ◆ Desk top ready
- ◆ Rack mountable
  - ◆ Mounting Bracket Kit sold separately (KT-UNIVLBRKT-01R)

**NOTE:** Power supply (PWRS-14000-148C) &  
Country Specific AC Line Cord Sold Separately



## PWRS-14000-148C

PWR SPLY:100-240 VAC,12VDC,4.16A MOD.

Order country specific three wire grounded AC  
Line Cord (sold separately)

Also compatible with ET1, MC40, MC45, & TC55.

## KT-UNIVLBRKT-01R

Cradle mounting bracket for the 5- Slot Charge  
Only Cradle. Accommodates Power Supplies on  
lower shelf.



# TC55 5-SLOT CRADLE:

## AC LINE CORDS for use with PWRS-14000-148C



COUNTRY	SKU	DESCRIPTION
Bolivia	<a href="#">50-16000-220R</a>	AC Line Cord, 1.8M, grounded, three wire CEE 7/7plug.
Iran	<a href="#">50-16000-220R</a>	AC Line Cord, 1.8M, grounded, three wire CEE 7/7plug.
Abu Dhabi	<a href="#">50-16000-220R</a>	AC Line Cord, 1.8M, grounded, three wire CEE 7/7plug.
Australia	<a href="#">50-16000-217R</a>	AC Line Cord, 1.9M, grounded, three wire AS 3112 plug.
China	<a href="#">50-16000-217R</a>	AC Line Cord, 1.9M, grounded, three wire AS 3112 plug.
China	<a href="#">50-16000-257R</a>	AC Line Cord, 1.8M, grounded, three wire, IEC 60320 C13 plug.
Dubai	<a href="#">50-16000-220R</a>	AC Line Cord, 1.8M, grounded, three wire CEE 7/7plug.
Egypt	<a href="#">50-16000-220R</a>	AC Line Cord, 1.8M, grounded, three wire CEE 7/7plug.
Europe	<a href="#">50-16000-220R</a>	AC Line Cord, 1.8M, grounded, three wire CEE 7/7plug.
Hong Kong	<a href="#">50-16000-219R</a>	AC Line Cord, 1.8M, grounded, three wire BS1363 plug.
India	<a href="#">50-16000-669R</a>	AC Lind Cord, 1.9M, grounded, three wire BS 546 plug
Iraq	<a href="#">50-16000-219R</a>	AC Line Cord, 1.8M, grounded, three wire BS1363 plug.
Israel	<a href="#">50-16000-672R</a>	AC Line Cord, 1.9M grounded, three wire, S132 plug.
Italy	<a href="#">50-16000-671R</a>	AC Line Cord, 1.8M grounded, three wire, CIE 23-16 plug.
Japan	<a href="#">50-16000-218R</a>	AC Line Cord, 1.8M, grounded, three wire , NEMA 1-15P plug.
Korea	<a href="#">50-16000-220R</a>	AC Line Cord, 1.8M, grounded, three wire CEE 7/7plug.
Korea	<a href="#">50-16000-256R</a>	AC Line Cord, 1.8M, grounded, three-wire, CEE7/7 plug.
Malaysia	<a href="#">50-16000-219R</a>	AC Line Cord, 1.8M, grounded, three wire BS1363 plug.
New Guinea	<a href="#">50-16000-217R</a>	AC Line cord, 1.9M, grounded, three wire AS 3112 plug
Russia	<a href="#">50-16000-220R</a>	AC Line Cord, 1.8M, grounded, three wire CEE 7/7plug.
Singapore	<a href="#">50-16000-219R</a>	AC Line Cord, 1.8M, grounded, three wire BS1363 plug.
United Kingdom	<a href="#">50-16000-219R</a>	AC Line Cord, 1.8M, grounded, three wireBS1363 plug.
United States	<a href="#">23844-00-00R</a>	AC Line cord 7.5 ft long, grounded, three wire.
United States	<a href="#">50-16000-678R</a>	AC Line Cord, 36" long, grounded, three wire.
Vietnam	<a href="#">50-16000-220R</a>	AC Line Cord, 1.8M, grounded, three wire CEE 7/7plug.

# TC55 Miscellaneous SKUS

## USB Cable

[25-MCXUSB-01R](#)



## TC55 CRADLE REPLACEMENT PART SKUS

### Replacement Part Numbers

Base for 5-Slot Charge Only Cradle	<a href="#"><u>CRDUNIV-XX-5000R</u></a>	5-Slot Charge Only Cradle Base; requires Terminal specific Cups (CUPTC55XX-1000R, PWRS-14000-148C, and country specific AC Line Cord (all sold separately)
TC55 Cradle Adapter Cup	<a href="#"><u>CUPTC55XX-1000R</u></a>	TC55 Single Charging Cup for use with Charging Cradle (CRDUNIV-XX-5000R sold separately)
Blank Slot cover	<a href="#"><u>CUPUNICVR-5000R</u></a>	Blank Slot Covers for use with the 5-Slot Charge Only Cradle (CRDUNIV-XX-5000R). Plastic lid to cover and protect cradle charge slots when device specific charge cups are not in use. Contains 5 Pieces



# TC55 ACCESSORY LIST



Accessory Category	SKU	Description
Holster	<a href="#">SG-TC55-HLSTR1-01</a>	<b>TC55 HOLSTER</b> with Magnetic flap; can use with 1X/1.5X Battery, with or without optional boot. Compartment for stylus in upper flap.
Protective Boot	<a href="#">SG-TC55-BOOT1-01</a>	<b>TC55 BOOT: BLUE/BLACK;</b> Protective Boot; accommodates stylus (KT-TC55-STYLUS1-01; sold separately)
	<a href="#">SG-TC55-BOOT2-01</a>	<b>TC55 BOOT: GREY/BLACK;</b> Protective Boot; accommodates stylus (KT-TC55-STYLUS1-01; sold separately)
Single Terminal Charging	<a href="#">CBL-TC55-CHG1-01</a>	<b>TC55 RUGGED CHARGING CABLE;</b> Snap-On Rugged Charging Cable requires Power Supply (PWRS-124306-01R sold separately)
	<a href="#">PWRS-124306-01R</a>	<b>Power Supply</b> -100-240 VAC, 5 V, 1.2 A for rapid battery charging. Includes four international plugs for US, UK, EU and AU. For use with ES400 /MC40/MC45/TC55.
Multiple Terminal Charging	<a href="#">CRDUNIV-55-5000R</a>	<b>TC55 5-SLOT CHARGING CRADLE.</b> Requires PWRS-14000-148C & Country Specific AC Line Cord (sold separately).
	<a href="#">PWRS-14000-148C</a>	<b>Power Supply:</b> 100-240 VAC,12VDC,4.16A MOD . Order country specific three wire grounded AC Line Cord (sold separately)
	<a href="#">KT-UNIVLBRKT-01R</a>	<b>Cradle mounting bracket</b> for the 5– Slot Charge Only Cradle. Accommodates Power Supplies on lower shelf.
Vehicle Solutions	<a href="#">CRD-TC55-VCD1-01</a>	<b>TC55 VEHICLE CRADLE</b> with suction cup mounting kit. Purchase auto charge cable (VCA400-01R) separately for vehicle charging.
	<a href="#">VCA400-01R</a>	<b>Auto Charge Cable:</b> 12/24 Volt Micro USB Auto Charger (Cig Adapter)

# TC55 ACCESSORY LIST



Accessory Category	SKU	Description
USB Cable	<a href="#">25-MCXUSB-01R</a>	Micro USB Cable - for MC40 & TC55
Batteries	<a href="#">BTRY-TC55-29MA1-01</a>	TC55 1X BATTERY; 2,940 mAh Lithium-Ion, QTY-1
	<a href="#">BTRY-TC55-44MA1-01</a>	TC55 1.5X BATTERY; 4,410 mAh Lithium-Ion, QTY-1
	<a href="#">BTRY-TC55-29BR1-01</a>	TC55 1X BRAZIL BATTERY; 2,940 mAh Lithium-Ion, QTY-1
	<a href="#">BTRY-TC55-44BR1-01</a>	TC55 1.5X BRAZIL BATTERY; 4,410 mAh Lithium-Ion, QTY-1
Battery Doors	<a href="#">KT-TC55-29BTYD1-01</a>	TC55 1X BATTERY DOOR for TC55 when using a 1X Battery (BTRY-TC55-29MA1-01; sold separately)
	<a href="#">KT-TC55-44BTYD1-01</a>	TC55 1.5X BATTERY DOOR or TC55 when using a 1.5X Battery (BTRY-TC55-44MA1-01; sold separately)
Stylus	<a href="#">KT-TC55-STYLUS1-01</a>	TC55 SPARE STYLUS with Tether (QTY-1)
	<a href="#">KT-TC55-STYLUS1-03</a>	TC55 STYLUS with Tether (3-Pack)
Screen Protectors	<a href="#">KT-TC55-SCRNP1-03</a>	TC55 SCREEN PROTECTORS (3-Pack)
Replacement 5-Slot Cradle Parts	<a href="#">CUPTC55XX-1000R</a>	TC55 Single Charging Cup for use with 5-Slot Charging (CRDUNIV-XX-5000R (sold separately)
	<a href="#">CRDUNIV-XX-5000R</a>	BASE ONLY FOR 5-SLOT CHARGE ONLY CRADLE - works with MC40, MC45, and TC55. Must order device specific charging cups, power supply (PWRS-14000-148C) and country specific AC line cord separately.



[www.L-TronDirect.com](http://www.L-TronDirect.com)

800-830-9523

[info@L-Tron.com](mailto:info@L-Tron.com)

596 Fishers Station Dr | Victor, NY | 14564 | Suite 1 A

[www.L-Tron.com](http://www.L-Tron.com)

Get in touch with us  
on social media!

