

M-Class™ Mark II

Compact Industrial Printers ■ ■ ■



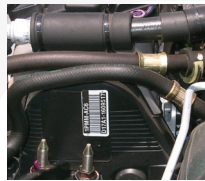
features at a glance ■ ■ ■

- **Form factor** with a small footprint for an industrial printer to fit in tight spaces where work space is a premium
- **Rugged construction** features a precision die-cast aluminum frame
- **Real time clock** for accurate date-time labeling
- **Multi-language menu** available in English, Spanish, German, Italian, and French
- **5-button, 128x64 LCD** graphical backlit display is easy to read, enabling user-friendly label configuration set-up
- **Field installable options** such as cutters, peel & present sensors, and thermal transfer option can be added easily to upgrade a base printer
- **Versatile media compatibility** supports coated side in or coated side out ribbons without reconfiguring the printer or purchasing additional options resulting in easier ribbon inventory management
- **IntelliSEAQ™ printhead:** proactive diagnostic tools allow easy access to printhead performance and history
- **Software:** The M-Class utilizes widely used DPL and supports MCL designer and 123 Print. With the PL-Z and PL-I printer language emulations, users can easily integrate the printer to existing solutions

The M-Class *Mark II* is a compact, industrial printer that offers outstanding value with a broad range of features. The smaller footprint is ideal for users who need the power of industrial printers but must consider space limitations. The M-Class is a perfect solution for warehouse, healthcare, logistics or retail applications. The modular design of the M-Class makes maintenance and part replacement easy, and the flexible design allows a variety of options to be upgraded in the field.

M-Class *Mark II* reduces the total cost of ownership with easy to maintain components. It offers a broad range of connectivity to meet diverse application requirements and easily integrate into any network. With an easy to navigate LCD graphics display for menu and printer function control, it is designed for any level of user. Support of UHF or HF RFID configurations for current or future requirements protects your printer investments. The high quality features, performance, and rugged reliability make the M-Class *Mark II* the best value of any printer on the market.

popular applications ■ ■ ■



Manufacturing

- Asset Tracking
- Finished Goods Marking
- Agency Labels
- Case Labels



Distribution and Logistics

- Cross Docking
- Sorting Centers
- Shipping Labels
- Pallet Tracking



Healthcare

- Specimen Tracking
- Records Labeling
- Product Identification
- Shipping Labels



Pharmaceuticals

- Compliance Labels
- Product Identification
- Track and Trace
- Pick Lists

your benefits ■ ■ ■

Increased productivity – M-Class *Mark II* keeps up with high label demand applications, boasting 32% faster performance than the nearest competitor in its class. The modular design and field-installable options cut back on downtime and improve efficiency. With its unique form factor, the M-Class *Mark II* fits easily in tight spaces where work space is a premium.

One printer does it all – The M-Class *Mark II* printer can be used in a wide variety of applications with a range of media compatibility, connectivity, emulation support, and options including RFID support. It is easy on the budget with the best value proposition for an industrial strength printer.



Integration Tools Datamax-O'Neil provides tools that gives you maximum flexibility in integration:

Integrate easily into existing applications

Our language emulation programs allow users to seamlessly replace Zebra and Intermec printers.

Reduce set-up time:

DMXconfig - Set-up utility
DMXNetmanager - Remote management
IntelliSEAQ™ - Built-in print head reporting
Firmware

Connectivity for all environments

Optional Ethernet-wired LAN 10/100,
wireless 802.11 b/g



datamax • o'neil

right by our customers.

product specifications ■ ■ ■

at a glance

	M-4206	M-4210	M-4308
Print technology	Direct thermal / Thermal transfer (optional)	Direct thermal / Thermal transfer (optional)	Direct thermal / Thermal transfer (optional)
Print speed	6 IPS (152 mm/s)	10 IPS (254 mm/s)	8 IPS (203 mm/s)
Resolution	203 DPI (8 dots/mm)	203 DPI (8 dots/mm)	300 DPI (12 dots/mm)
RFID option	not available	available	available

print technology ■ ■ ■

- Maximum print width:
 - 4.25" (108mm)
- Print length range:
 - 0.25" - 99" (6.35mm - 2514.6mm)

physical characteristics ■ ■ ■

- Dimensions:
 - 10.21" H x 10.10" W x 18.19" D (259mm H x 257mm W x 462mm D)
- Weight:
 - 27.0 lbs. (12.2kg)
- Operating temperature:
 - 40°F to 95°F (4°C to 35°C)
- Power source:
 - Auto-sensing 90-132 or 180-264 VAC @ 47-63Hz
- On-board real time clock (M-4210 & M-4308)
- 128 x 64 LCD backlit graphics display
- Construction:
 - Metal cabinet, clear side window to easily monitor media supply levels

integration ■ ■ ■

- Communication ports:
 - Standard: Serial RS232, Parallel Bi-Directional, USB 2.0 Compatible
 - Optional: Ethernet-Wired LAN 10/100, Wireless 802.11b/g

	WEP	WPA	WPA2
Modes		PSK/Enterprise	
Security/Encryption	64/128	TKIP/RC4	CCMP/AES
Authentication	LEAP, EAP-PEAP, EAP-FAST, EAP-TTLS, EAP-LEAP, IPV4		

- Software
 - DMX Config: Complete printer setup utility
 - DMX NetManager
 - Embedded Network Web Pages
 - Windows® Drivers - NT, XP, Vista
- Firmware
 - Updates: available online
 - Universal printer command language: PL-Z (Zebra), PL-I (Intermec), PL-B (Boca)

accessories ■ ■ ■

- External rewinder
- Serial data cable

barcodes/fonts/graphics ■ ■ ■

- Memory:
 - 16MB DRAM / 8MB Flash
- Barcodes:
 - Linear: Code 3 of 9, UPC-A, UPC-E, Interleaved 2 of 5, Industrial 2 of 5, Std 2 of 5, Code 11, Code 93, Code 128, EAN-8, EAN-13, HIBC, Codabar, Plessey, UPC 2 and 5 digit addendums, Postnet, UCC/EAN Code 128, Telepen, Planetcode, FIM, USPS-4 State
 - 2D Symbolologies: MaxiCode, PDF417, USD-8, Datamatrix, QR Code, Codeablock, Code 16k, Aztec, TLC 39, Micro PDF417, GS1 Databar
- Resident fonts:
 - Ten alphanumeric fonts from 2.5 to 23 point size, including OCR-A, OCR-B, CG Triumvirate™ smooth font from AGFA®
 - Scalable Fonts: CG Triumvirate Bold Condensed, CG Triumvirate & CG Times with Cyrillic, Greek Arabic and Hebrew character support
- Downloadable font types:
 - True-Type, Bitmap
- Character set:
 - Over 50 resident character sets; Unicode/UTF8 support
- Font expansion/rotation:
 - All fonts expandable vertically and horizontally up to 24x; fonts and graphics can be printed in four directions: 0°, 90°, 180° and 270°s
- Graphics supported:
 - .PCX, .BMP and .IMG files
- Reversible field/mirror image
 - Any font or graphic field can be printed as a normal or reverse image

agency approval ■ ■ ■

Contact sales for the most current list

warranty ■ ■ ■

- Printer*: 1 year (including platen roller and installed options)
- Printhead*: 1 year or 1,000,000 inches whichever comes first
- Contact sales representative for extended warranty options

* when used with approved supplies

media ■ ■ ■

- Media type:
 - Roll-fed: 8.0" (203.2mm) O.D. on a 3.0" (76.2mm) core; 7.0" (177.8mm) on a 1.5" (38.1mm) core
 - Fan-fold stock: accepted from rear and bottom of printer
 - Die-cut or continuous labels
 - Perforated or continuous tag/ticket stock
- Media width range:
 - 0.75" - 4.65" (19mm - 118.1mm)
- Minimum media length:
 - Tear-off and rewind modes: 0.25" (6.35mm)
 - Peel and cutter modes: 1.0" (25.4mm)
- Media thickness range:
 - 0.0025" - 0.01" (0.0635mm - 0.254mm)
- Media sensing:
 - "See through" for liner-backed die-cut labels and tags
 - Reflective sensor for black mark label media
- Label backfeed:
 - For use with optional cutter or present sensor
- Ribbon:
 - Width range: 1.0" - 4.5" (25.4mm - 114.3mm)
 - Standard ribbon lengths: 984' (300m), 1476' (450m)
 - Coated side in and coated side out

options ■ ■ ■

- Thermal transfer (field or factory installed)
- Label present sensor
- Peel and present (1.5"/38mm min. label length)
- Internal rewinder
- Standard cutter
- Revolving convertible hub 3" (76mm) / 1.5" (40mm) (M-4206 only)
- MCL enabled (M-4210 and M-4308 only)
- RFID -UHF & HF (M-4210 and M-4308 only)
- Ethernet-Wired LAN 10/100
- Wireless 802.11b/g
- ILPC (Hangul, Simplified Chinese, and Kanji) font support



www.datamax-oneil.com

Specifications subject to change without notice.
Copyright 2010, Datamax-O'Neil (rev. 20100921)



datamax • o'neil
right by our customers.

A Company



www.L-TronDirect.com

800-830-9523

info@L-Tron.com

596 Fishers Station Dr | Victor, NY | 14564 | Suite 1 A

www.L-Tron.com

Get in touch with us
on social media!

