



# Genuine Zebra® Ribbons



SEE MORE. DO MORE.



## Get the best out of your Zebra printer

Zebra offers ribbons that are designed specifically for use with Zebra labels, in Zebra printers. No other supplier knows our printers like we do! Zebra's wealth of knowledge and experience in ribbons and ribbon technology ensures customers get the best ribbon to meet their application needs and get the most out of their Zebra printer.

### Zebra quality

At Zebra, quality is about more than just the product; it is in everything we do. Registered to the international standard for Quality Management Systems, ISO 9001: 2008, we insist on quality from start to finish.

This is in addition to our extensive product-testing programme that means you can rely on the best-possible quality – every time!

### Zebra service

Supplying many million square metres of ribbon annually to the EMEA market, Zebra offers many service benefits to its partners. Around 140 different ZipShip<sup>SM</sup> ribbon items specifically for Zebra printers are available from stock. Whether you need resin ribbons for your G-Series<sup>TM</sup> printer or a range of grades for your 220Xi4<sup>TM</sup> printer, these and all the standard sizes in between are in stock for fast delivery.

### Zebra price

Zebra is the largest buyer of ribbons globally and uses that buying power to offer competitive pricing across the range. So not only do you get the best quality; you also get the best price. Add to this Zebra's reliable service and a minimum order of just one box – why pay more elsewhere?

### Zebra ribbons

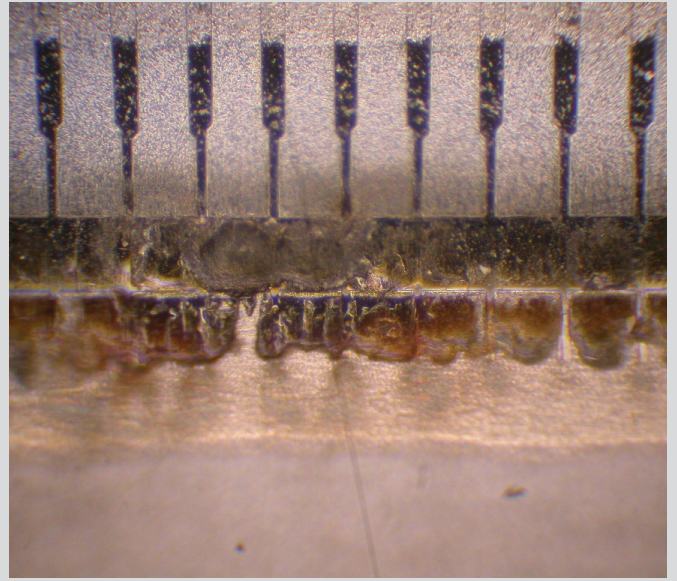
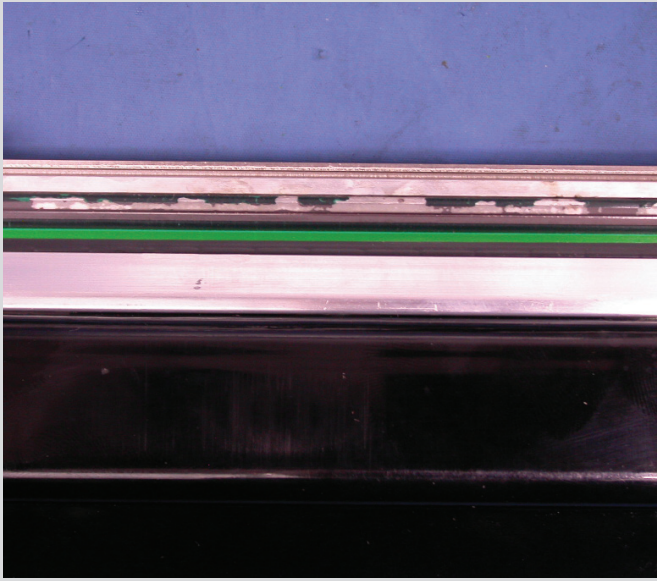
- The only ribbons tested and recommended for Zebra printers
- Around 140 ribbon items in stock for the full range of Zebra barcode printers, available for immediate delivery
- Competitively priced as Zebra is the largest purchaser of ribbons globally
- Minimum order quantity is just one box

### Additional benefits

- Eliminate downtime due to inconsistent print quality, reprints or scannability issues
- Dramatically increase the life of the printhead
- Lower the total lifetime cost of the printer

# QUALITY YOU CAN RELY ON

---



**Pictures showing examples of printhead damage that can occur when using non-Zebra ribbons**

Each of our ribbons is put through a rigorous testing programme by our dedicated R&D team before being accepted into the product range. The programme includes:

- Three days of tests on the backcoating of the ribbon prior to any print tests taking place. This is to ensure there is minimal breaking of the ribbon and that no dusting or ink blocking occurs
- Print-testing on the full Zebra printer range with a wide selection of label materials at a full range of print speeds and burn temperatures
- 75km of continuous printing at optimum speed and burn temperature. If any damage is visible on the printhead during the 75km test, the ribbon is rejected
- A full range of mechanical and chemical tests on the printed ribbon image. These include simulated weathering (QUV), abrasion resistance using a crockometer and rub tests using a wide range of chemicals

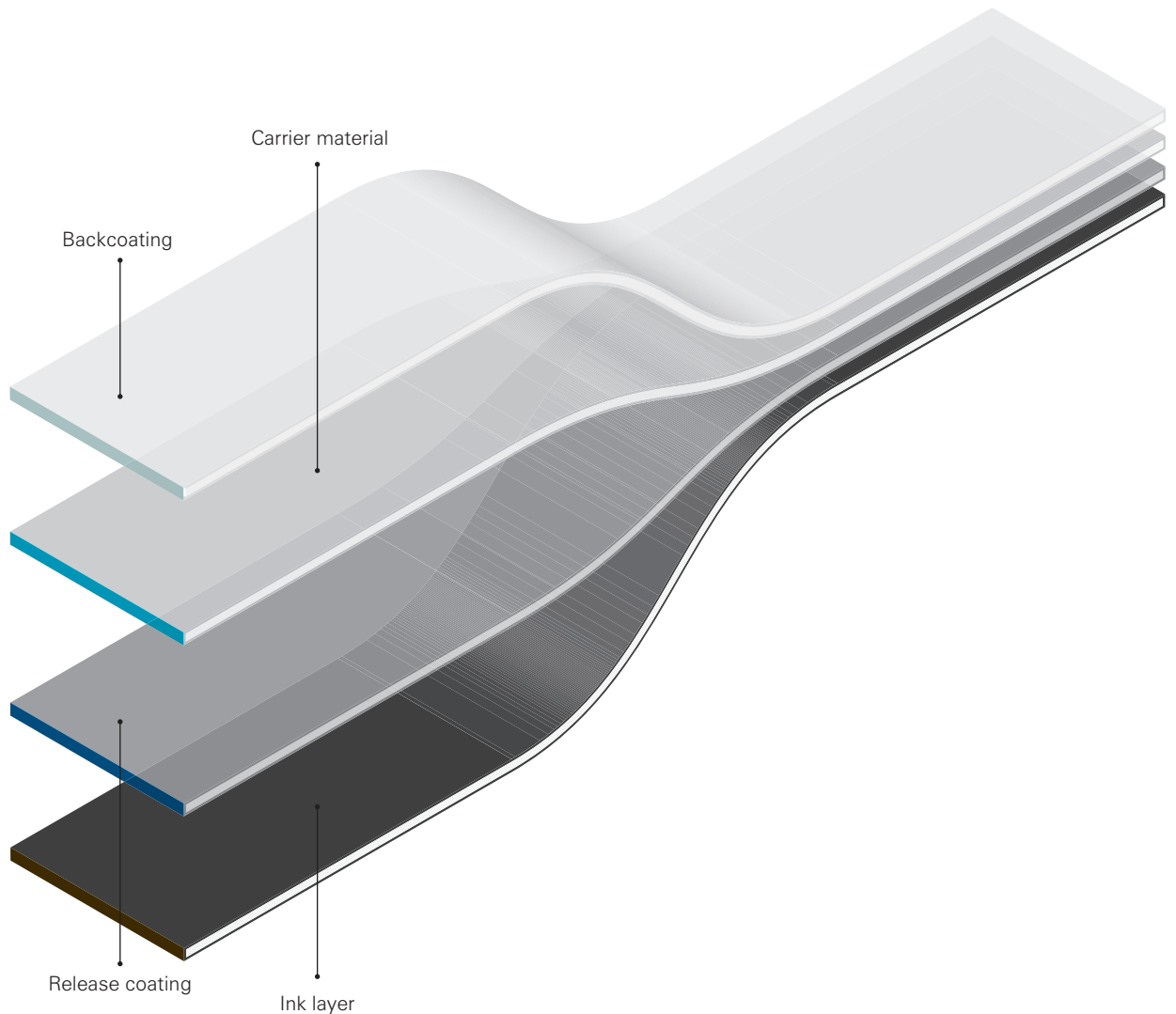
## **Better for business**

Using Zebra ribbons and media can dramatically increase the life of the printhead, giving you quality printing results for longer. However, the benefits to your business go further than just improved printing:

- Downtime is reduced due to long printhead life, so printers stay in service for longer
- Time and costs associated with reprinting due to poor print quality are greatly reduced
- Reduced costs due to the need for fewer replacement printheads and service charges
- Lower total cost of ownership compared to a Zebra printer using non-Zebra supplies

# QUALITY YOU CAN RELY ON

---



The composition of a ribbon is integral to how the ribbon performs. Zebra considers each element of the ribbon to ensure optimum performance is achieved in Zebra printers.

## **Backcoating**

The backcoating is the part of the ribbon closest to the printhead. Its main function is to protect the printhead from excessive heat, static and abrasion. If the backcoating fails then the ink layer could make contact with the printhead causing blocking – and in turn, poor print quality and printer issues.

A poor-quality backcoating can cause friction between the ribbon and the printhead, causing damage to the printhead and potentially static electricity. Not only might this cause damage to the printer but it could be extremely dangerous for the user.

## **Carrier material**

The carrier material is the thickest part of the ribbon. It must offer excellent tear resistance and have good heat conductivity to ensure the ink receives the heat uniformly and a high-quality print is achieved.

## **Release coating**

The release coating provides a bond between the carrier film and the ink. During the printing process it ensures that the ink is transferred evenly and smoothly.

## **Ink layer**

The ink layer is the part of the ribbon that is transferred onto the media. It can be made of wax, resin or a combination of both. It can also contain additives to achieve a better print and colour when needed.

# QUALITY YOU CAN RELY ON



## Wax ribbons

### 2300

A pure wax ribbon featuring excellent print quality on a wide range of coated and uncoated papers. Print speeds of up to 250mm/sec (10ips) can be achieved on Zebra label material. The 2300 ribbon is a perfect low-cost choice for general-purpose label printing.

### 2100

A resin-enhanced wax ribbon featuring excellent print quality on a wide range of coated and uncoated papers. Print speeds of up to 300mm/sec (12ips) and 200mm/sec (8ips) for rotated barcodes can be achieved. Superb small-font printability and superior abrasion resistance make the 2100 ribbon ideal for logistics and retail applications.

## Wax/resin ribbons

### 3400

A high-performance wax/resin ribbon featuring excellent print quality on Zebra coated and uncoated papers as well as many matt synthetics. Print speeds of up to 200mm/sec (8ips) can be achieved even with rotated barcodes. With good abrasion resistance and some chemical resistance, the 3400 provides an economical solution for many industrial and retail applications. The 3400 ribbon is UL™-recognised\* when used with Zebra's Z-Xtreme™ 4000 labels.

### 3200

A premium wax/resin ribbon featuring outstanding print quality on a wide range of Zebra papers and synthetics. Print speeds of up to 250mm/sec (10ips) can be achieved, even with rotated barcodes. With resistance to smearing and abrasion as well as to many everyday chemicals and solvents, the 3200 offers excellent print durability in harsh environments. The 3200 ribbon is UL- and CSA-recognised\* when used with Zebra's Z-Xtreme 4000 labels.

## Resin ribbons

### 4800

A high-quality resin ribbon featuring excellent print quality, particularly suitable for printing dense barcodes and high-resolution graphics. Print speeds of up to 150mm/sec (6ips) can be achieved using Zebra labels. With excellent resistance to abrasion and chemicals, the 4800 ribbon is ideal for use in harsh outdoor environments as well as in industrial and automotive applications. The 4800 ribbon is UL- and CSA-recognised\* when used with Zebra's Z-Ultimate® 3000 and Z-Xtreme 4000 labels.

### 5095

A high-performance resin ribbon featuring excellent printability and image durability. Print speeds of up to 150mm/sec (6ips) can be achieved with Zebra synthetics, even with very small fonts. With excellent resistance to abrasion, extreme temperatures and chemicals, the 5095 ribbon is ideal for use in harsh outdoor environments and applications involving chemicals. The 5095 ribbon is UL- and CSA-recognised\* when used with Zebra's Z-Ultimate 3000 and Z-Xtreme 4000 labels.

### 5100

A premium resin ribbon featuring excellent print quality and durability in the harshest applications. Print speeds of up to 150mm/sec (6ips) can be achieved using Zebra synthetics. With excellent resistance to extreme temperatures, chemicals and solvents, the 5100 ribbon may be used in place of a laminated label and in applications such as printed circuit board labelling. The 5100 ribbon is UL- and CSA-recognised\* when used with Zebra's Z-Ultimate 3000 and Z-Xtreme 4000 labels.

\* See specification sheets for full details

# SPECIFICATIONS AT A GLANCE\*

## GENUINE ZEBRA RIBBONS

	COST	PRINT SPEED	SCRATCH RESISTANCE	CHEMICAL RESISTANCE	DESCRIPTION	TYPICAL APPLICATIONS				
						MANUFACTURING	RETAIL	TRANSPORTATION AND LOGISTICS	HEALTHCARE	GOVERNMENT
2300 STANDARD	+	++ ++ +	+	+	A standard wax ribbon. Designed for cost-effective label printing where durability above that offered by a direct-thermal solution is required	Labelling of packaging material, work-in-progress labels	Product and price-promotion labelling	Labelling of packaging materials including boxes and pallets	Patient-record labelling	Document tracking
2100 HIGH-PERFORMANCE	+	++ ++ ++ +	+	+	A resin-enhanced wax ribbon. Offers added scratch- and smear resistance and some temperature resistance. Allows for increased print speeds over 2300 wax ribbon	Labelling of packaging materials that require some scratch resistance	Product labelling that is repeatedly scanned	Pallet tags	Pharmacy labelling	
3400 HIGH-PERFORMANCE	++ +	++ ++ +	+	+	A high-performance wax/resin ribbon offering increased scratch-, smear- and temperature resistance. Some moderate chemical resistance when used with Z-Xtreme 4000T label materials	In-process labelling and asset tracking	Price tagging in greenhouses and nurseries	Labelling of packaging materials that will be exposed to variable temperatures		
3200 PREMIUM	++ +	++ ++ ++ +	+	++ +	A premium wax/resin ribbon offering excellent printability on a wide range of paper and synthetic label materials. Good scratch- and smear resistance. Good heat- and chemical resistance for moderate chemicals. Resistance to harsh chemicals when used with Z-Xtreme 4000T label materials	Outdoor product tags for wire, cable and fabricated parts	Indoor and outdoor product and shelf-edge labelling	Shipping labels requiring excellent scratch resistance	Pharmacy labelling on a variety of label substrates	
4800 PERFORMANCE	++ ++ +	++ +	++ ++ +	++ ++ +	A high-quality resin ribbon that can be used in combination with Zebra coated paper labels. When used with Zebra synthetic label materials, this ribbon provides excellent chemical- and abrasion resistance, and small fonts and high-resolution graphics can be printed	Labelling of products for construction applications	Price labelling of outdoor items for extended periods	Paper packaging labels that go through heat shrink tunnels	Labelling of surgical instruments requiring autoclave resistance	Asset tracking requiring chemical resistance
5095 HIGH-PERFORMANCE	++ ++ +	++ +	++ ++ +	++ ++ ++ +	A high-performance resin ribbon. Offers resistance to harsh chemicals, solvents and high temperatures. Excellent print quality of small fonts and high-resolution graphics even at high speeds	High-definition component labelling		Vehicle identification	Laboratory labelling requiring harsh chemical- and high-temperature resistance	Asset tracking requiring chemical resistance
5100 PREMIUM	++ ++ ++ +	++ +	++ ++ +	++ ++ ++ +	A premium resin ribbon designed to print labels for harsh conditions. Offers resistance to extreme heat, chemicals and solvents	High heat applications such as steel and printed circuit board labelling		Outdoor asset tracking labelling	Laboratory labelling where resistance to very harsh chemicals is required	
IMAGE LOCK™	++ ++ ++ ++ +	++	++ ++ ++ ++ +	++ ++ ++ ++ +	A unique ribbon and label combination. Image Lock, when printed with Z-Xtreme 5000T label materials, can resist the harshest chemicals such as toluene, xylene, acetone and more	Chemical-resistant automotive labels			Laboratory labelling where resistance to very harsh chemicals is required	



### Zebra Technologies – EMEA Headquarters & Sales Office

Zebra Technologies Europe Limited, Dukes Meadow, Millboard Road, Bourne End, Buckinghamshire, SL8 5XF, United Kingdom

**Telephone:** +44 (0)1628 556000 **Fax:** +44 (0)1628 556001 **Email:** mseurope@zebra.com **Web:** www.zebra.com

### Other EMEA Locations

**Europe:** France, Germany, Italy, the Netherlands, Poland, Russia, Spain, Sweden, Turkey

**Middle East & Africa:** Dubai, South Africa

\*Specifications subject to change without notice.

©2013 ZIH Corp. Image Lock, Z-Xtreme and all product names and numbers are Zebra trademarks, ZipShip is a service mark, and Zebra, representation of Zebra Head and Z-Ultimate are registered trademarks of ZIH Corp. All rights reserved. UL is a trademark of UL LLC. All other trademarks are the property of their respective owners.



[www.L-TronDirect.com](http://www.L-TronDirect.com)

800-830-9523

[info@L-Tron.com](mailto:info@L-Tron.com)

596 Fishers Station Dr | Victor, NY | 14564 | Suite 1 A

[www.L-Tron.com](http://www.L-Tron.com)

Get in touch with us  
on social media!

