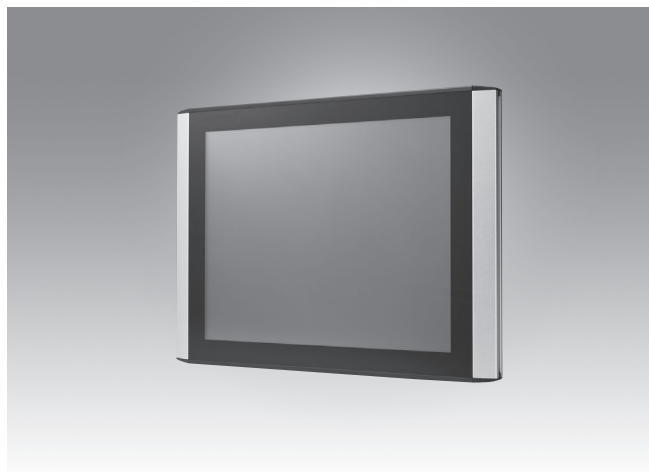


# ITM-5115

## 15" XGA Industrial LED Monitor with Full-Flat Resistive Touchscreen



### Features

- 15" XGA LED backlight panel provides 20 ~ 30% power savings
- -20 ~ +60°C wide range operating temperature
- Easy-clean 5-wire resistive plane touch
- Combo RS-232 & USB interface for touchscreen function
- VGA & DVI interface
- Simple, elegant design with IP54 front panel protection
- Peripheral connectors in frame rail design
- Supports panel, wall, desktop, and swing-arm VESA mounting
- Optional ARK-1500-series Box PC in rear AD box for all-in-one, total solution



### Introduction

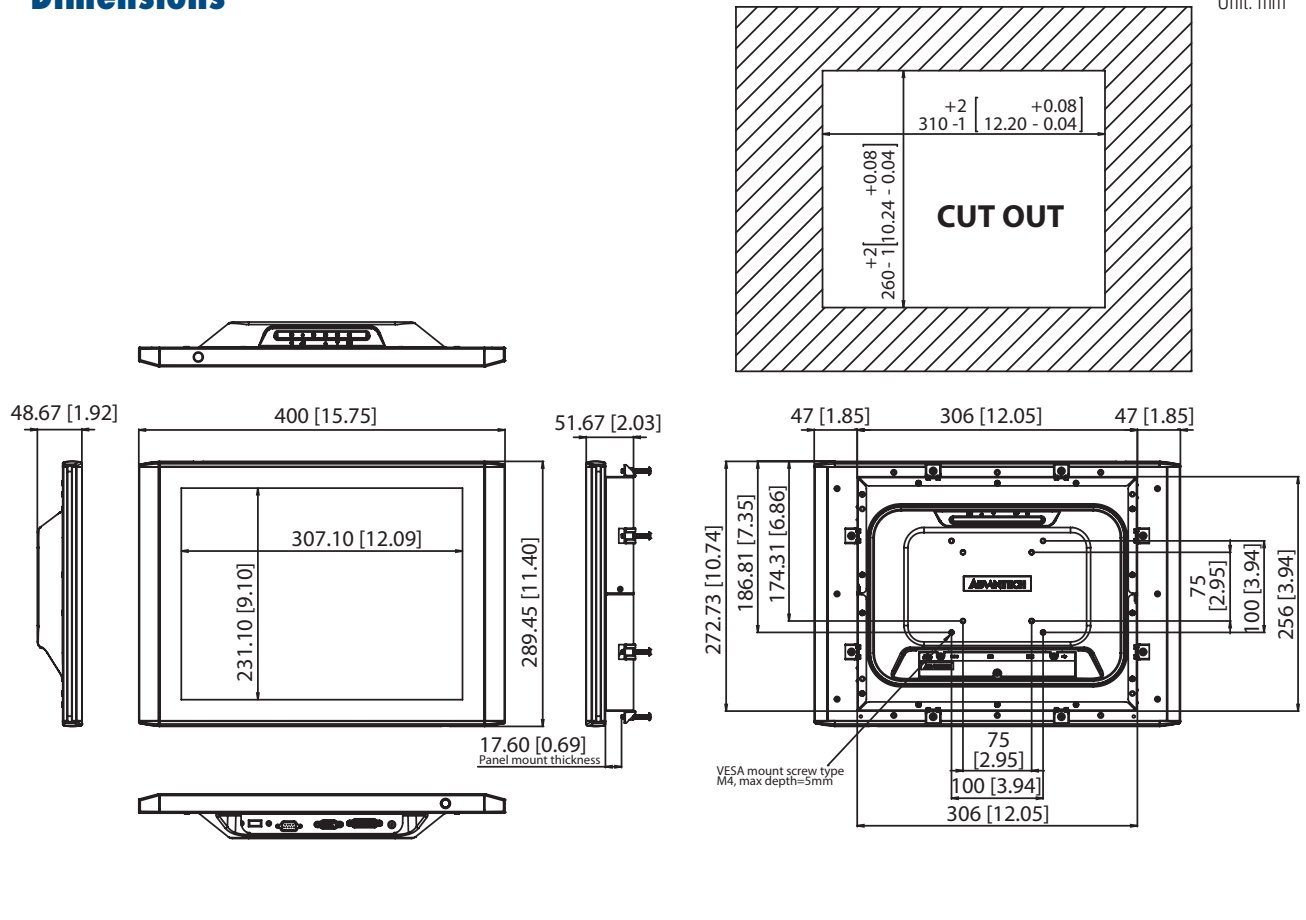
ITM-5115 is a 15" LED TFT-LCD touchscreen monitor specifically designed for industrial applications. It's a stable, rugged display with VGA & DVI outputs. The simple, yet elegant flat plane design provides for easy cleaning, and the Box PC-plus-monitor option offers added flexibility.

### Specifications

Model		ITM-5115R-M
Display	Size	15" LED backlight panel
	Resolution	1024 x 768 (XGA)
	Viewing Angle	80°/80°/70°/70°/
	Brightness	400 (cd/m <sup>2</sup> )
	Color Support	16.2 M / 262 K colors
	Contrast Ratio	700
	Response Time	8 [msec]
	Lamp Life (hrs)	50,000 hrs
Touchscreen	Touchscreen Type	5-Wire resistive touch window
	Surface Hardness	3H
	Durability	36 million touches
Environment	Operating Temperature	-20 ~ 60°C (-4 ~ 140°F)
	Storage Temperature	-30 ~ 70°C (-22 ~ 158°F)
	Humidity	5 ~ 95% @ 40°C, non-condensing
	Shock	10 G peak acceleration (11 ms duration)
	Front Panel	IP54
System	I/O	VGA x 1; DVI-D x 1; 12 V <sub>DC</sub> Jack x 1; USB x1; RS-232 x 1 (USB & RS-232 are reserved for the connection to enable touch usage only)
	OSD	Keys: Menu, Up, Down, Enter, Monitor Power on/off Menu Functions: Brightness, Volume, Contrast, Clock Phase, Horizontal Position, Vertical Position, Sharpness
	Power	DC Jack, external 60 W power adapter, with AC 100 ~ 240 V input and DC +12 V @ 5 A output
	EMC Compliance	CE/FCC/CCC/BSMI
	Safety	CB/UL/CCC/BSMI

## Dimensions

Unit: mm



## Ordering Information

Part Number	Description
ITM-5115R-MA1E	15" XGA LED Full-Flat Touch Monitor
1702002600	Power cord 3P (USA)
1700000596	Power cord 3P (China)
1700018705	Power cord 3P (EU)
96STANDKIT-ITM	Stand kit
96PSA-A60W12R1-1	ADP A/D 100-240V 60W 12V WO/PFC
1700000243	DVI cable 2.0 M
1700002215	USB-A(M)/USB-A(M) 1.8 meters



[www.L-TronDirect.com](http://www.L-TronDirect.com)

800-830-9523

[info@L-Tron.com](mailto:info@L-Tron.com)

596 Fishers Station Dr | Victor, NY | 14564 | Suite 1 A

[www.L-Tron.com](http://www.L-Tron.com)

Get in touch with us  
on social media!

