

AMiS Accessories

Medication Box

AMIS-60-MED2-17-AE



*Compatible with AMIS-60/AMIS-50/AMIS-30

Medical Box with 1 x 2 Drawer and Key Lock

- Dimension: 33 (L) x 50 (W) x 36 (H) cm
- Drawer: 1 x 2, 50 (W) x 15 (H) cm
- Assembly Way: DIN-Rail mount on cart
- Material: Metal
- Color: White
- Weight: 14.2 kg

P/N	Packing Item List	Q'ty
AMIS-60-MED2-17-AE	Medication Box	1
	DIN RAIL	2
	Screws-1/4R/S + M4*12L ST Ni	4
	Screws-R/S D=9 H=3 + M5*20L ST Ni	6
	Nylon Stop Slice	2

AMIS-60-MED3-18-AE



*Compatible with AMIS-60/AMIS-50/AMIS-30

Medical Box with 2 x 4 Medicine Tray, 1 Drawer and Key Lock

- Dimension: 33 (L) x 50 (W) x 36 (H) cm
- Medicine Tray: 2 x 4, inner space 101 x 213 x 6 mm
- Drawer: 1 x 1, 50 (W) x 15 (H) cm
- Assembly Way: DIN-Rail mount on cart
- Material: Metal
- Color: White
- Weight: 14.2 kg

P/N	Packing Item List	Q'ty
AMIS-60-MED3-18-AE	Medication Box	1
	DIN RAIL	2
	Screws-1/4R/S + M4*12L ST Ni	4
	Screws-R/S D=9 H=3 + M5*20L ST Ni	6
	Nylon Stop Slice	2

AMIS-60-MED4-19-AE



*Compatible with AMIS-60/AMIS-50/AMIS-30

Medical Box with 2 x 4 Medicine Tray, 2 Drawer and Key Lock

- Dimension: 33 (L) x 50 (W) x 36 (H) cm
- Medicine Tray: 2 x 4, inner space 101 x 213 x 6 mm
- Drawer: 1 x 1, 50 (W) x 7 (H) cm
- Assembly Way: DIN-Rail mount on cart
- Material: Metal
- Color: White
- Weight: 14.2 kg

P/N	Packing Item List	Q'ty
AMIS-60-MED4-19-AE	Medication Box	1
	DIN RAIL	2
	Screws-1/4R/S + M4*12L ST Ni	4
	Screws-R/S D=9 H=3 + M5*20L ST Ni	6
	Nylon Stop Slice	2

AMIS60MEDE-ES



*Compatible with AMIS-60/AMIS-50/AMIS-30

Medication Box with 4 x 4 Medicine Tray, Sliding Door and Key Lock

- Dimension: 33 (L) x 47 (W) x 39 (H) cm
- Medicine Tray: 4 x 4, inner space 101 x 213 mm
- Assembly Way: DIN-Rail mount on cart
- Material: Metal
- Color: White, sliding door in gray
- Weight: 12.8 kg

P/N	Packing Item List	Q'ty
AMIS60MEDE-ES	Medication Box	1
	DIN RAIL	2
	Screws-1/4R/S + M4*12L ST Ni	4
	Screws-R/S D=9 H=3 + M5*20L ST Ni	6
	Nylon Stop Slice	2

AMIS60MED2L2DAE-ES



*Compatible with AMIS-60/AMIS-50/AMIS-30

Medical Box with 1 x 2 Drawer and Key Lock

- Dimension: 33 (L) x 47 (W) x 39 (H) cm
- Drawer: 1 x 2, 388 (L) x 310 (W) x 135 (H) mm
- Assembly Way: DIN-Rail mount on cart
- Material: Metal
- Color: White, drawer in blue
- Weight: 11.7 kg

product	Packing Item List	Q'ty
AMIS60MED2L2DAE-ES	Medication Box	1
	DIN RAIL	2
	Screws-1/4R/S + M4*12L ST Ni	4
	Screws-R/S D=9 H=3 + M5*20L ST Ni	6
	Nylon Stop Slice	2

Holder

(*Compatible with AMiS-60/AMiS-50/AMiS-30)

9658A05001E

Power Holder

A holder for hand-sanitizer bottle

- Dimension (inches): 5" x 2.25" x 1.5"
- Weight (lbs): 0.393 lbs



9658A05002E

Sharps Holder

A holder for various shapes and sizes of sharp containers

- Dimension (inches): 12" x 8" x 4"
- Weight (lbs): 1.0 lbs



9658A05003E

Glove Box Holder

Stores gloves for easy reach of the medical staff

- Dimension (inches): 10" x 5.5" x 3.5"
- Weight (lbs): 1.115 lbs



9658A05004E

Mouse Holder

Convenient Storage for a mouse, Saves space while keeping mouse secured

- Dimension (inches): 5" x 3" x 2"
- Weight (lbs): 0.2 lbs



9658A05005E

Scanner Holder

Holder for barcode scanners

- Dimension (inches): 5" x 2" x 3"
- Weight (lbs): 0.2 lbs



AMIS-60-HD-00-AE

Bottle Rack for Hand Disinfection

- Dimension (inches): 5" x 4" x 5"
- Weight (lbs): 0.74 lbs
- Oval: 85mm / circular diameter: 71 mm



AMIS-60-SH-00-AE

Bottle Rack_Sharp Container+ Hand disinfection

- Dimension (inches): 12" x 8" x 5.5"
- Weight (lbs): 2.2 lbs
- circular diameter: 18 cm/8 cm



AMIS-60-BS-00-AE

Barcode Scanner Mount on Neck

- Dimension (inches): 5" x 3" x 2.5"
- Weight (lbs): 0.04 lbs



AMIS-60-SC-01-AE

Bottle Rack for 2 x Sharp Container

- Dimension (inches): 12" x 6.5" x 3.5"
- Weight (lbs): 1.58 lbs
- circular diameter: 12.8 cm



AMiS Accessories

Basket

(*Compatible with AMiS-60/AMiS-50/AMiS-30)

AMIS-60-BK-00-AE

Basket (L28cmxW14cmxH16cm) & Mount Kit

- Dimension (inches): 10" x 5.9" x 6.6"
- Weight (lbs): 1.3 lbs



9658A05013E

Basket 10" x 10" x 4"

Convenient storage of medical supplies and staff protection products. Storage baskets are wire-formed and have an epoxy white painted finish.

- Dimension (inches): 10" x 10" x 4"
- Weight (lbs): 1.854 lbs



9658A05012E

Basket 10" x 6" x 9"

Convenient storage of medical supplies and staff protection products. Storage baskets are wire-formed and have an epoxy white painted finish.

- Dimension (inches): 10" x 6" x 9"
- Weight (lbs): 1.358 lbs



9658A05011E

Basket 5" x 5" x 4"

Convenient storage of medical supplies and staff protection products. Storage baskets are wire-formed and have an epoxy white painted finish.

- Dimension (inches): 5" x 5" x 4"
- Weight (lbs): 0.651 lbs

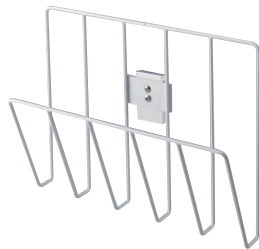


9658A05009E

Chart Holder

Keeps patient information within reach

- Dimension (inches): 13" x 3¼" x 10"
- Weight (lbs): 1.115 lbs



Infusion Equipment

(*Compatible with AMiS-60/AMiS-50/AMiS-30)

9658A05008E

IV Pole

Used to hold I.V. Solution bags

- Dimension (inches): 9.0" x 4.0"
- Weight (lbs): 0.587 lbs



9658A05016E

SSM Arm

Mounts Vital Signs patient monitors. 180° side to side motion with the ability to lock the arm in any position. Has integrated cable management and can be mounted directly onto the AMiS

- Dimension (inches): 20" x 15" x 3"
- Weight (lbs): 3.4 lbs



AMIS-60-IF-00-AE

Infusion Frame + Mount Kit

- Dimension (inches): 26" ~ 42"
- Weight (lbs): 1.78 lbs



Trash Can

AMIS-50-TC-00-AE

Monocular Trash Can with Inner tank & Mount Kit for AMiS-50

*Compatible with AMiS-30



AMIS-60-TC-00-AE

Monocular Trash Can with Inner tank & Mount Kit for AMiS-60



AMIS-60-TC-10-AE

Monocular Trash Can & Inner tank

*Compatible with AMiS-60/AMiS-50/AMiS-30



AMIS-50-TC-20-AE

Binocular Nursing Trash Can for AMiS 50 series, 20L

- Dimension (inches): 12.5" x 9" x 13.5"
- Weight (lbs): 83.2 lbs

*Compatible with AMiS-30



Others

(*Compatible with AMiS-60/AMiS-50/AMiS-30)

9658A05006E

Cord Wrap

Neatly organizes cables, cords and other hanging wires

- Dimension (inches): 6.5" x 1.5" x 1.5"
- Weight (lbs): 0.512 lbs



9658A05007E

Utility Clip

Holds cords, blood pressure cuffs and other medical devices

- Dimension (inches): 2.5" x 4" x 2.5"
- Weight (lbs): 0.446 lbs



9658A05010E

Folding Shelf

This shelf has pivot and folding capabilities for easy stow away when not in use.

Built with infection control in mind, its smooth surface is designed for effortless cleaning.

It can hold up to 25 lbs (11.3 kg).

- Dimension (inches): 12" x 12"
- Weight (lbs): 4.233 lbs



9658A05014E

Tubing Clips

Provides access and organization of the tubing and cables

- Dimension (inches): 1.0" x 1.0"
- Weight (lbs): 0.008 lbs



9658A05015E

Supply Clip

Ideal for holding paper and single use packaged items.
1 to 4 clips are available

- Dimension (inches): 1.0" x 0.5"
- Weight (lbs): 0.009 lbs



9658A05017E

Track Adapter

Fairfield track adapter with 4 x M4 screw hole



AMiS Accessories

Storage Box

AMIS-50-SB-MAIN-AE

Main Housing

Storage Box Main Housing for AMiS 50



AMIS-60-SB-MAIN-AE

Main Housing

Storage Box Main Housing for AMiS 60



AMIS-60-SB-BIN-AE

Blue Bin

Storage Box Blue Bin for AMiS 50/60_ packing
10pcs/carton



*Compatible with AMiS-60/AMiS-50 Main Housing

AMIS-60-SB-DWR-AE

White Drawer

Storage Box White Drawer for AMiS 50/60_ packing
10pcs/carton

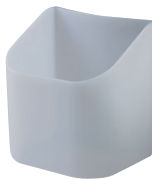


*Compatible with AMiS-60/AMiS-50 Main Housing

AMIS-60-SB-HDR-AE

Bottle Holder

Storage Box Bottle Holder for AMiS 50/60_ packing
10pcs/carton



*Compatible with AMiS-60/AMiS-50 Main Housing



www.L-TronDirect.com

800-830-9523

info@L-Tron.com

596 Fishers Station Dr | Victor, NY | 14564 | Suite 1 A

www.L-Tron.com

Get in touch with us
on social media!

