

# AMiS Accessories

## Medication Box

### AMIS-60-MED2-17-AE



\*Compatible with AMIS-60/AMIS-50/AMIS-30

Medical Box with 1 x 2 Drawer and Key Lock

- Dimension: 33 (L) x 50 (W) x 36 (H) cm
- Drawer: 1 x 2, 50 (W) x 15 (H) cm
- Assembly Way: DIN-Rail mount on cart
- Material: Metal
- Color: White
- Weight: 14.2 kg

P/N	Packing Item List	Q'ty
AMIS-60-MED2-17-AE	Medication Box	1
	DIN RAIL	2
	Screws-1/4R/S + M4*12L ST Ni	4
	Screws-R/S D=9 H=3 + M5*20L ST Ni	6
	Nylon Stop Slice	2

### AMIS-60-MED3-18-AE



\*Compatible with AMIS-60/AMIS-50/AMIS-30

Medical Box with 2 x 4 Medicine Tray, 1 Drawer and Key Lock

- Dimension: 33 (L) x 50 (W) x 36 (H) cm
- Medicine Tray: 2 x 4, inner space 101 x 213 x 6 mm
- Drawer: 1 x 1, 50 (W) x 15 (H) cm
- Assembly Way: DIN-Rail mount on cart
- Material: Metal
- Color: White
- Weight: 14.2 kg

P/N	Packing Item List	Q'ty
AMIS-60-MED3-18-AE	Medication Box	1
	DIN RAIL	2
	Screws-1/4R/S + M4*12L ST Ni	4
	Screws-R/S D=9 H=3 + M5*20L ST Ni	6
	Nylon Stop Slice	2

### AMIS-60-MED4-19-AE



\*Compatible with AMIS-60/AMIS-50/AMIS-30

Medical Box with 2 x 4 Medicine Tray, 2 Drawer and Key Lock

- Dimension: 33 (L) x 50 (W) x 36 (H) cm
- Medicine Tray: 2 x 4, inner space 101 x 213 x 6 mm
- Drawer: 1 x 1, 50 (W) x 7 (H) cm
- Assembly Way: DIN-Rail mount on cart
- Material: Metal
- Color: White
- Weight: 14.2 kg

P/N	Packing Item List	Q'ty
AMIS-60-MED4-19-AE	Medication Box	1
	DIN RAIL	2
	Screws-1/4R/S + M4*12L ST Ni	4
	Screws-R/S D=9 H=3 + M5*20L ST Ni	6
	Nylon Stop Slice	2

### AMIS60MEDE-ES



\*Compatible with AMIS-60/AMIS-50/AMIS-30

Medication Box with 4 x 4 Medicine Tray, Sliding Door and Key Lock

- Dimension: 33 (L) x 47 (W) x 39 (H) cm
- Medicine Tray: 4 x 4, inner space 101 x 213 mm
- Assembly Way: DIN-Rail mount on cart
- Material: Metal
- Color: White, sliding door in gray
- Weight: 12.8 kg

P/N	Packing Item List	Q'ty
AMIS60MEDE-ES	Medication Box	1
	DIN RAIL	2
	Screws-1/4R/S + M4*12L ST Ni	4
	Screws-R/S D=9 H=3 + M5*20L ST Ni	6
	Nylon Stop Slice	2

### AMIS60MED2L2DAE-ES



\*Compatible with AMIS-60/AMIS-50/AMIS-30

Medical Box with 1 x 2 Drawer and Key Lock

- Dimension: 33 (L) x 47 (W) x 39 (H) cm
- Drawer: 1 x 2, 388 (L) x 310 (W) x 135 (H) mm
- Assembly Way: DIN-Rail mount on cart
- Material: Metal
- Color: White, drawer in blue
- Weight: 11.7 kg

product	Packing Item List	Q'ty
AMIS60MED2L2DAE-ES	Medication Box	1
	DIN RAIL	2
	Screws-1/4R/S + M4*12L ST Ni	4
	Screws-R/S D=9 H=3 + M5*20L ST Ni	6
	Nylon Stop Slice	2

## Holder

(\*Compatible with AMiS-60/AMiS-50/AMiS-30)

### 9658A05001E

#### Power Holder

A holder for hand-sanitizer bottle

- Dimension (inches): 5" x 2.25" x 1.5"
- Weight (lbs): 0.393 lbs



### 9658A05002E

#### Sharps Holder

A holder for various shapes and sizes of sharp containers

- Dimension (inches): 12" x 8" x 4"
- Weight (lbs): 1.0 lbs



### 9658A05003E

#### Glove Box Holder

Stores gloves for easy reach of the medical staff

- Dimension (inches): 10" x 5.5" x 3.5"
- Weight (lbs): 1.115 lbs



### 9658A05004E

#### Mouse Holder

Convenient Storage for a mouse, Saves space while keeping mouse secured

- Dimension (inches): 5" x 3" x 2"
- Weight (lbs): 0.2 lbs



### 9658A05005E

#### Scanner Holder

Holder for barcode scanners

- Dimension (inches): 5" x 2" x 3"
- Weight (lbs): 0.2 lbs



### AMIS-60-HD-00-AE

#### Bottle Rack for Hand Disinfection

- Dimension (inches): 5" x 4" x 5"
- Weight (lbs): 0.74 lbs
- Oval: 85mm / circular diameter: 71 mm



### AMIS-60-SH-00-AE

#### Bottle Rack\_Sharps Container+ Hand disinfection

- Dimension (inches): 12" x 8" x 5.5"
- Weight (lbs): 2.2 lbs
- circular diameter: 18 cm/8 cm



### AMIS-60-BS-00-AE

#### Barcode Scanner Mount on Neck

- Dimension (inches): 5" x 3" x 2.5"
- Weight (lbs): 0.04 lbs



### AMIS-60-SC-01-AE

#### Bottle Rack for 2 x Sharp Container

- Dimension (inches): 12" x 6.5" x 3.5"
- Weight (lbs): 1.58 lbs
- circular diameter: 12.8 cm



# AMiS Accessories

## Basket

(\*Compatible with AMiS-60/AMiS-50/AMiS-30)

### AMIS-60-BK-00-AE

#### Basket (L28cmxW14cmxH16cm) & Mount Kit

- Dimension (inches): 10" x 5.9" x 6.6"
- Weight (lbs): 1.3 lbs



### 9658A05013E

#### Basket 10" x 10" x 4"

Convenient storage of medical supplies and staff protection products. Storage baskets are wire-formed and have an epoxy white painted finish.

- Dimension (inches): 10" x 10" x 4"
- Weight (lbs): 1.854 lbs



### 9658A05012E

#### Basket 10" x 6" x 9"

Convenient storage of medical supplies and staff protection products. Storage baskets are wire-formed and have an epoxy white painted finish.

- Dimension (inches): 10" x 6" x 9"
- Weight (lbs): 1.358 lbs



### 9658A05011E

#### Basket 5" x 5" x 4"

Convenient storage of medical supplies and staff protection products. Storage baskets are wire-formed and have an epoxy white painted finish.

- Dimension (inches): 5" x 5" x 4"
- Weight (lbs): 0.651 lbs

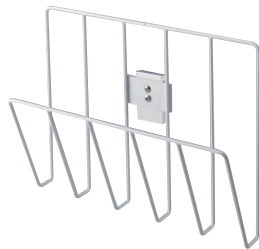


### 9658A05009E

#### Chart Holder

Keeps patient information within reach

- Dimension (inches): 13" x 3¼" x 10"
- Weight (lbs): 1.115 lbs



## Infusion Equipment

(\*Compatible with AMiS-60/AMiS-50/AMiS-30)

### 9658A05008E

#### IV Pole

Used to hold I.V. Solution bags

- Dimension (inches): 9.0" x 4.0"
- Weight (lbs): 0.587 lbs



### 9658A05016E

#### SSM Arm

Mounts Vital Signs patient monitors. 180° side to side motion with the ability to lock the arm in any position. Has integrated cable management and can be mounted directly onto the AMiS

- Dimension (inches): 20" x 15" x 3"
- Weight (lbs): 3.4 lbs



### AMIS-60-IF-00-AE

#### Infusion Frame + Mount Kit

- Dimension (inches): 26" ~ 42"
- Weight (lbs): 1.78 lbs



## Trash Can

### AMIS-50-TC-00-AE

Monocular Trash Can with Inner tank & Mount Kit for AMiS-50

\*Compatible with AMiS-30



### AMIS-60-TC-00-AE

Monocular Trash Can with Inner tank & Mount Kit for AMiS-60



### AMIS-60-TC-10-AE

Monocular Trash Can & Inner tank

\*Compatible with AMiS-60/AMiS-50/AMiS-30



### AMIS-50-TC-20-AE

Binocular Nursing Trash Can for AMiS 50 series, 20L

- Dimension (inches): 12.5" x 9" x 13.5"
- Weight (lbs): 83.2 lbs

\*Compatible with AMiS-30



## Others

(\*Compatible with AMiS-60/AMiS-50/AMiS-30)

### 9658A05006E

#### Cord Wrap

Neatly organizes cables, cords and other hanging wires

- Dimension (inches): 6.5" x 1.5" x 1.5"
- Weight (lbs): 0.512 lbs



### 9658A05007E

#### Utility Clip

Holds cords, blood pressure cuffs and other medical devices

- Dimension (inches): 2.5" x 4" x 2.5"
- Weight (lbs): 0.446 lbs



### 9658A05010E

#### Folding Shelf

This shelf has pivot and folding capabilities for easy stow away when not in use.

Built with infection control in mind, its smooth surface is designed for effortless cleaning.

It can hold up to 25 lbs (11.3 kg).

- Dimension (inches): 12" x 12"
- Weight (lbs): 4.233 lbs



### 9658A05014E

#### Tubing Clips

Provides access and organization of the tubing and cables

- Dimension (inches): 1.0" x 1.0"
- Weight (lbs): 0.008 lbs



### 9658A05015E

#### Supply Clip

Ideal for holding paper and single use packaged items.  
1 to 4 clips are available

- Dimension (inches): 1.0" x 0.5"
- Weight (lbs): 0.009 lbs



### 9658A05017E

#### Track Adapter

Fairfield track adapter with 4 x M4 screw hole



# AMiS Accessories

## Storage Box

### AMIS-50-SB-MAIN-AE

#### Main Housing

Storage Box Main Housing for AMiS 50



### AMIS-60-SB-MAIN-AE

#### Main Housing

Storage Box Main Housing for AMiS 60



### AMIS-60-SB-BIN-AE

#### Blue Bin

Storage Box Blue Bin for AMiS 50/60\_ packing  
10pcs/carton



\*Compatible with AMiS-60/AMiS-50 Main Housing

### AMIS-60-SB-DWR-AE

#### White Drawer

Storage Box White Drawer for AMiS 50/60\_ packing  
10pcs/carton

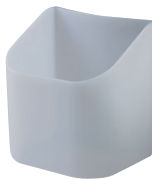


\*Compatible with AMiS-60/AMiS-50 Main Housing

### AMIS-60-SB-HDR-AE

#### Bottle Holder

Storage Box Bottle Holder for AMiS 50/60\_ packing  
10pcs/carton



\*Compatible with AMiS-60/AMiS-50 Main Housing



[www.L-TronDirect.com](http://www.L-TronDirect.com)

800-830-9523

[info@L-Tron.com](mailto:info@L-Tron.com)

596 Fishers Station Dr | Victor, NY | 14564 | Suite 1 A

[www.L-Tron.com](http://www.L-Tron.com)

Get in touch with us  
on social media!

